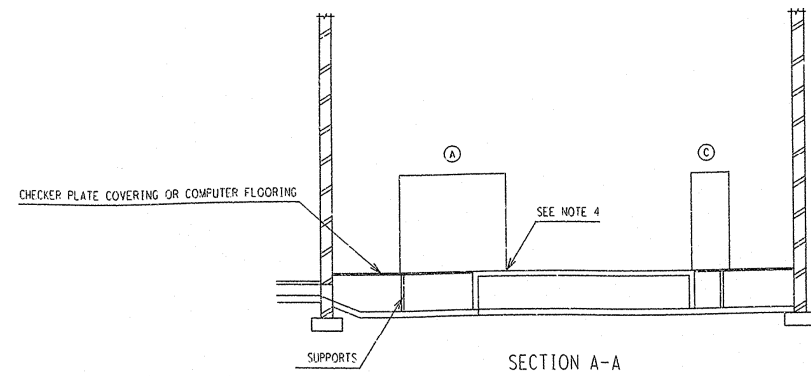


LEGEND

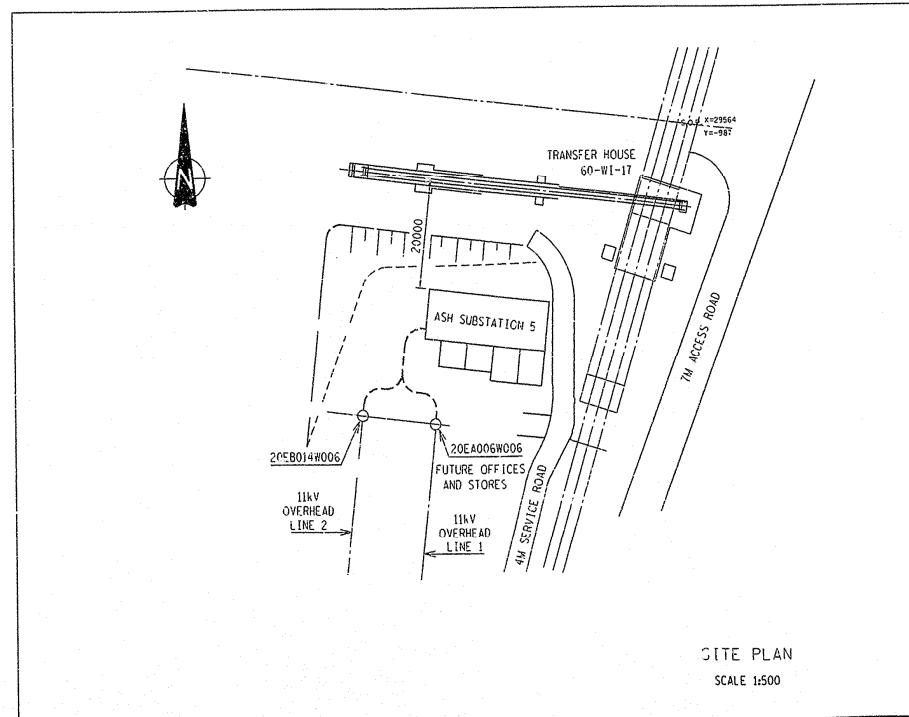
- (A) 60EJ & 60EK - 11kV ASH CONVEYOR BOARD 5A & 5B
- (B) 60FK & 60FL - 3.3kV ASH CONVEYOR BOARD 5A & 5B
- (C) 61CE & 61CF - 380V ASH CONVEYOR BOARD 5A & 5B
- (D) 60HF09 - ALARM PANEL
- (E) 60M007 - TELEMETRY CABINET
- (F) 60DC009 - BATTERY TRIPPING UNIT
- (G) 20HY31 - P.L.C. CUBICLE
- (H) - C & I JUNCTION BOX
- (I) - C & I JUNCTION BOX
- (J) 20EU26 - POWER SUPPLY UNIT

NOTES

1. ALL BOARDS TO BE BOTTOM ENTRY-- POWER & CONTROL CABLES.
2. ALL CABLES ENTERING THE SUBSTATION WILL BE RUN IN TRENCHES, BURIED ACCORDING TO ESCOM SPECIFICATIONS.
3. FOR TRANSFORMER STANDARD PLINTH ARRANGEMENT SEE 0.63/5406 SHTS 1-4.
4. TRANSFORMER LOADS-- 1.6MVA =
5. ALL CABLE OPENINGS IN WALLS ARE TO BE SEALED AFTER CABLES HAVE BEEN INSTALLED (BY CIVIL CONTRACTOR)
6. BASE FRAMES TO BE INSTALLED BY CABLE CONTRACTOR PRIOR TO SCREEDING.
7. ALL CABLES INTERLINKED WITH PANELS IN SUBSTATION 3 MUST BE USED WHERE POSSIBLE. IN SUBSTATION 5, - WHEN EQUIPMENT IS TRANSFERRED.



PLAN



SITE PLAN
SCALE 1:500

IN-PIT ASH DUMP STACKING SYSTEM

REV	DATE	BY	CHKD	DESCRIPTION	REV	DATE	BY	CHKD	DESCRIPTION
1	10/09/06	F.B. RENCKEN		ISSUED FOR CONSTRUCTION	1	10/09/06	F.B. RENCKEN		ISSUED FOR CONSTRUCTION
2	10/09/06	F.B. RENCKEN		REVISED TO INCLUDE 11kV OVERHEAD LINE 2	2	10/09/06	F.B. RENCKEN		REVISED TO INCLUDE 11kV OVERHEAD LINE 2
3	10/09/06	F.B. RENCKEN		REVISED TO INCLUDE 11kV OVERHEAD LINE 1	3	10/09/06	F.B. RENCKEN		REVISED TO INCLUDE 11kV OVERHEAD LINE 1
4	10/09/06	F.B. RENCKEN		REVISED TO INCLUDE 11kV OVERHEAD LINE 2	4	10/09/06	F.B. RENCKEN		REVISED TO INCLUDE 11kV OVERHEAD LINE 2
5	10/09/06	F.B. RENCKEN		REVISED TO INCLUDE 11kV OVERHEAD LINE 1	5	10/09/06	F.B. RENCKEN		REVISED TO INCLUDE 11kV OVERHEAD LINE 1



ESKOM
LETHABO POWER STATION
ASH SUBSTATION 5
ELECTRICAL EQUIPMENT LAYOUT

THIS DRAWING HAS BEEN CREATED ON A C.A.D. SYSTEM. ANY AMENDMENT MUST BE EFFECTED ON THE SAME SYSTEM.
C.A.D. REF: [101.175]24719E000.R05

SCALE 1:50
DATE 10/09/06
DRAWN BY F.B. RENCKEN
CHECKED BY F.B. RENCKEN
APPROVED BY F.B. RENCKEN
DATE 10/09/06
SCALE 1:50
0.63 / 24719
5